

- Notes**
1. All coordinates are in metres and referenced to Zone 10 of the Ontario Coordinate System, NAD (North American Datum) 1927, 1968 adjustment, 3 degree MTM (NAD 27 MTM 3 degrees Zone 10)
 2. All dimensions are in metres unless noted otherwise.
 3. Proposed network design, plot connections and details are indicative only and are to be confirmed by the providers (Bell and Rogers).
 4. Existing services are based in the topographical survey issued by EllisDon on 24 February 2020. Location and extent of existing services is indicative only and is intended to identify approximate location of main service corridors. For full details refer to utility providers record drawings or topographical survey.
 5. Off-site reinforcement and temporary construction services are excluded from this drawing.
 6. Further liaison with Bell, Rogers and the building designer is required to confirm the number of connections to each plot and the internal building arrangement.
 7. Location of chamber for proposed telecoms networks to be further coordinated in next stages of design. It is expected that a rectangular 900mmx450mm chamber will be required in network junctions, bends in acute angles and for each plot connection.
 8. Based on discussions with local providers (Bell and Rogers), it is expected that each building will require its own connection to a POP (point of presence) room from the existing network to avoid ownership conflicts in the future. Two MDF (main distribution frame) rooms should be installed in the site (indicative locations shown in this plan) to distribute the telecoms network across each building POP room.

Legend

- Site Boundary
- Basement/Tunnel Extent
- Extent of Right-of-way

Existing Utilities

- Bell Telecommunications Network
- Rogers Telecommunications Network
- Existing Utilities to be abandoned or diverted

Proposed Utilities

- Bell Telecommunications Network
- Rogers Telecommunications Network

02	26/02/21	AF	FF	HJ
01	15/05/20	AF	FF	HJ

Zoning By-Law Application r1

For planning submission

Rev	Date	By	Chkd	Appd

ARUP

Arup Canada Inc.
121 Bloor Street East
Suite 900
Toronto ON M4W 3M5
Canada
www.arup.com

Client
First Capital (Park Lawn) Corporation and 2253213 Ontario Limited

Project Title
2150 Lake Shore

Drawing Title
Proposed Telecommunication Network

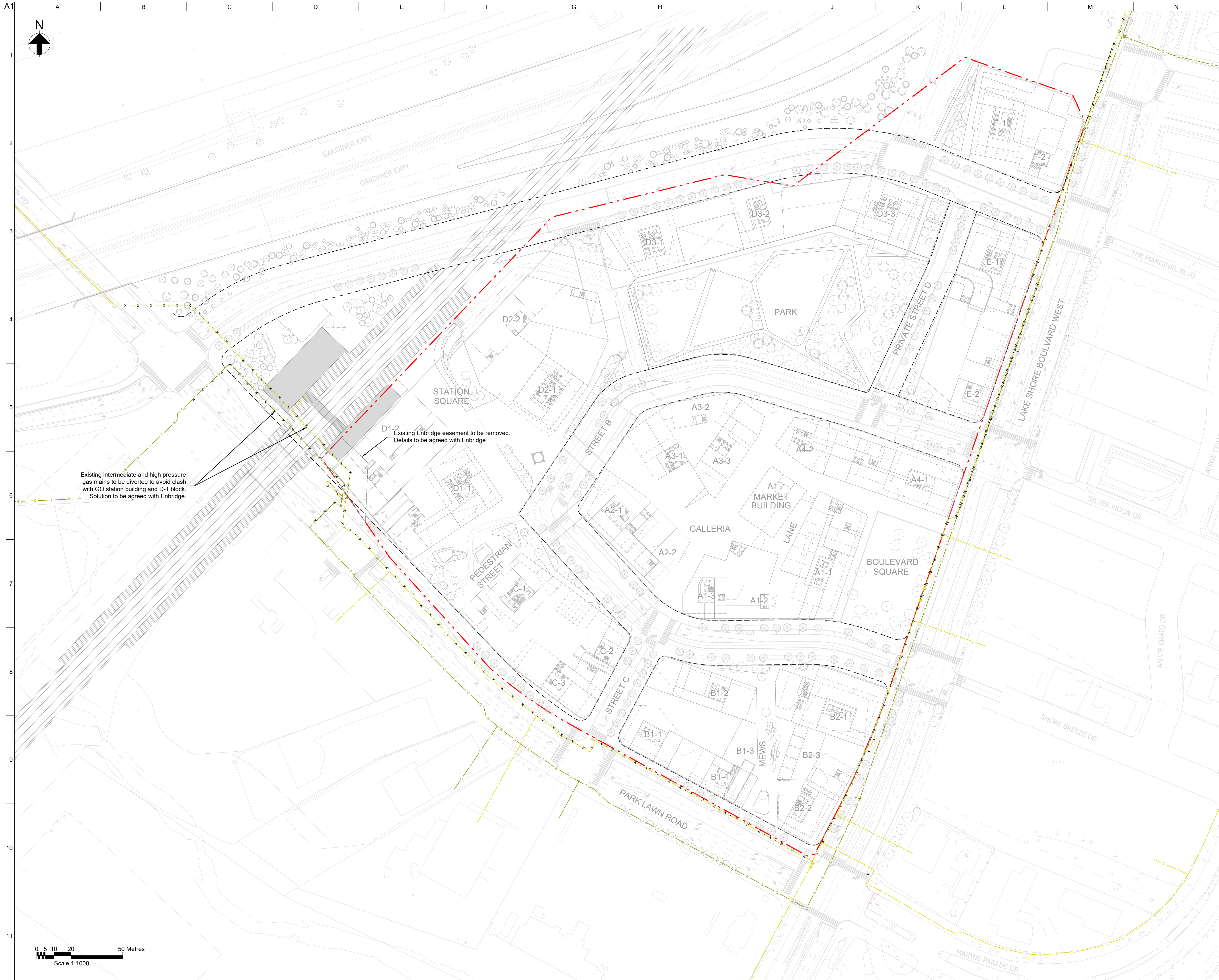
Scale at Arch B
1:1000

Role
Civil

Suitability
Detailed Masterplan

Arup Job No 277167	Rev 02
------------------------------	------------------

Name
LSB-ARP-XX-XX-DR-CU-71003



- Notes**
1. All coordinates are in metres and referenced to Zone 10 of the Ontario Coordinate System, NAD (North American Datum) 1927, 1968 adjustment, 3 degree MTM (NAD 27 MTM 3 degrees Zone 10)
 2. All dimensions are in metres unless noted otherwise.
 3. Existing services are based on information provided by Enbridge in September 2020 (EDG File Number 24761921).

- Legend**
- Site Boundary
 - Basement/Tunnel Extent
 - Extent of Right-of-way

- Existing Utilities**
- Intermediate pressure gas main
 - High pressure gas main
 - Existing Gas Main to be abandoned or diverted

- Proposed Utilities**
- Gas Main Intermediate and High pressure

01	26/02/21	AF	FF	HJ
----	----------	----	----	----

Zoning By-Law Application r1

Rev	Date	By	Chkd	Appd
-----	------	----	------	------

ARUP

Arup Canada Inc.
121 Bloor Street East
Suite 900
Toronto ON M4W 3M5
Canada
www.arup.com

Client
First Capital (Park Lawn) Corporation and 2253213 Ontario Limited

Project Title
2150 Lake Shore

Drawing Title
Proposed Gas Network

Scale at Arch D
1:1000

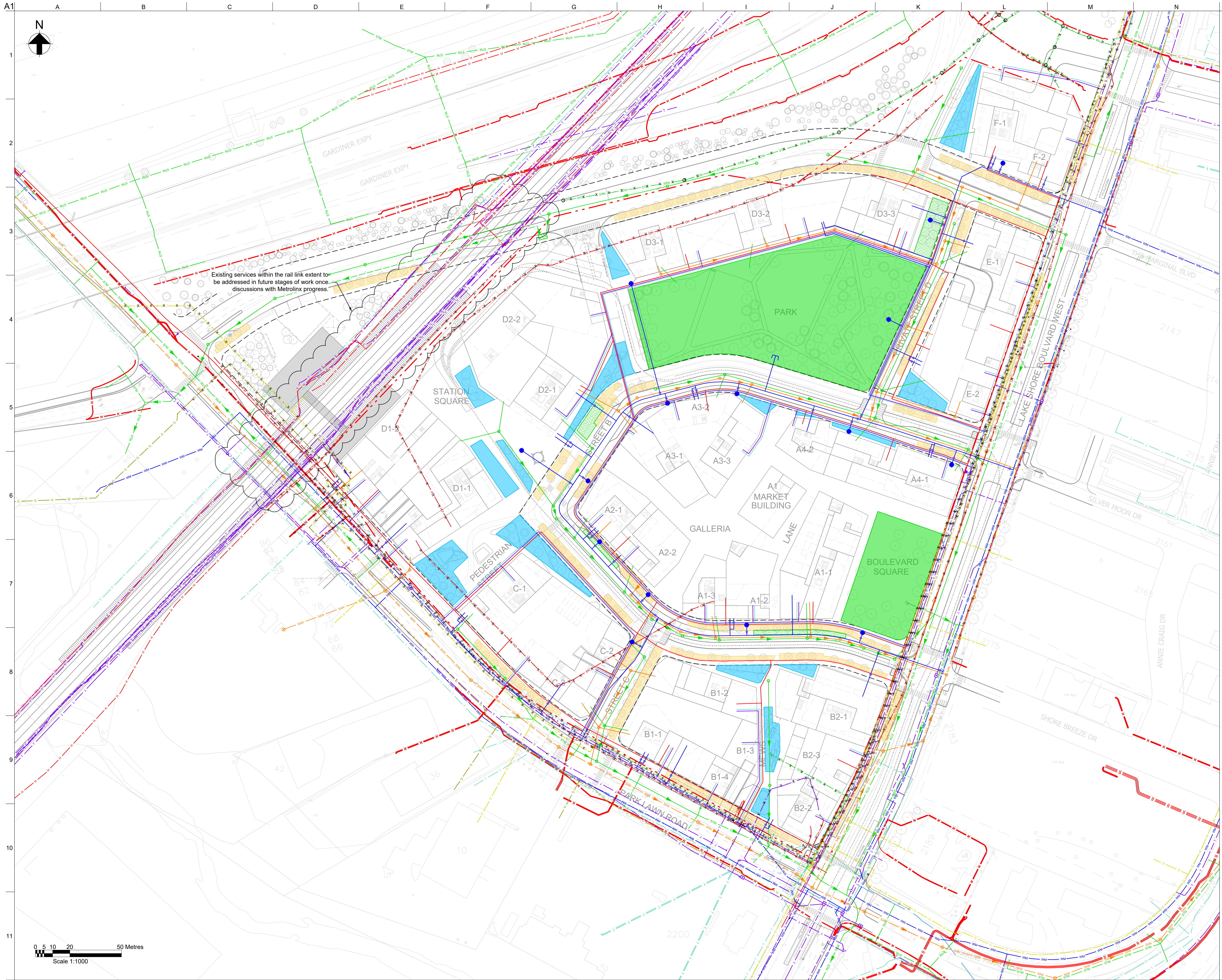
Role
Civil

Suitability
Detailed Masterplan

Arup Job No
277167

Name
LSB-ARP-XX-XX-DR-CU-71004

Rev
01



Existing services within the rail link extent to be addressed in future stages of work once discussions with Metrolinx progress.

- Notes**
- All coordinates are in metres and referenced to Zone 10 of the Ontario Coordinate System, NAD (North American Datum) 1927, 1968 adjustment, 3 degree MTM (NAD 27 MTM 3 degrees Zone 10)
 - Existing services are based in the topographical survey issued by EllisDon on 24 February 2020 and TWAG information provided by Toronto Water on 04 February 2020.
 - Connection to existing networks is subject to agreement with statutory authorities and approving bodies.
 - Location and extent of existing services is indicative only and is intended to identify approximate location of main service corridors. For full details refer to utility providers record drawings or topographical survey.
 - Off-site reinforcement and temporary construction services are excluded from this drawing.
 - Proposed network design, plot connections and details are indicative only and are subject to approval.
 - Conflicts with existing utilities and other proposed works should be notified to the Engineer of Record.

- Legend**
- Site Boundary
 - Basement/Tunnel Extent
 - Extent of Right-of-way
- Existing Utilities**
- Sanitary Network
 - Stormwater Network
 - Water Network
 - Intermediate pressure gas main
 - High pressure gas main
 - Bell Telecommunications Network
 - Rogers Telecommunications Network
 - Street Lights
 - Hydro (Electrical Network)
 - Overhead Electrical
 - Rail Signal
 - Existing Utilities to be abandoned or diverted
- Proposed Utilities**
- Sanitary Sewer and Manhole
 - Stormwater Sewer and Manhole
 - Stormwater Force Main
 - Pumping Station
 - Park area including SWM facility with infiltration
 - Soakaway pit with Infiltration capacity
 - Soil Cells with Infiltration Capacity
 - Soft Landscape
 - Water Main
 - Gas Main Intermediate and High pressure
 - Bell Telecommunications Network
 - Rogers Telecommunications Network
 - Hydro Network (high and low voltage)

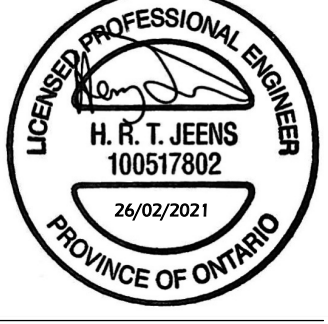

02	26/02/21	AF	FF	HJ
----	----------	----	----	----

Zoning By-Law Application r1

01	15/05/20	AF	FF	HJ
----	----------	----	----	----

For planning submission

Rev	Date	By	Chkd	Appd



Arup Canada Inc.
121 Bloor Street East
Suite 900
Toronto ON M4W 3M5
Canada
www.arup.com

Client

First Capital (Park Lawn) Corporation
and 2253213 Ontario Limited

Project Title

2150 Lake Shore

Drawing Title

Composite Landscape
and Utilities Plan

Scale at Arch 1:1000

Role

Civil

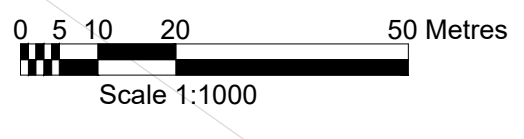
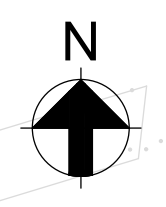
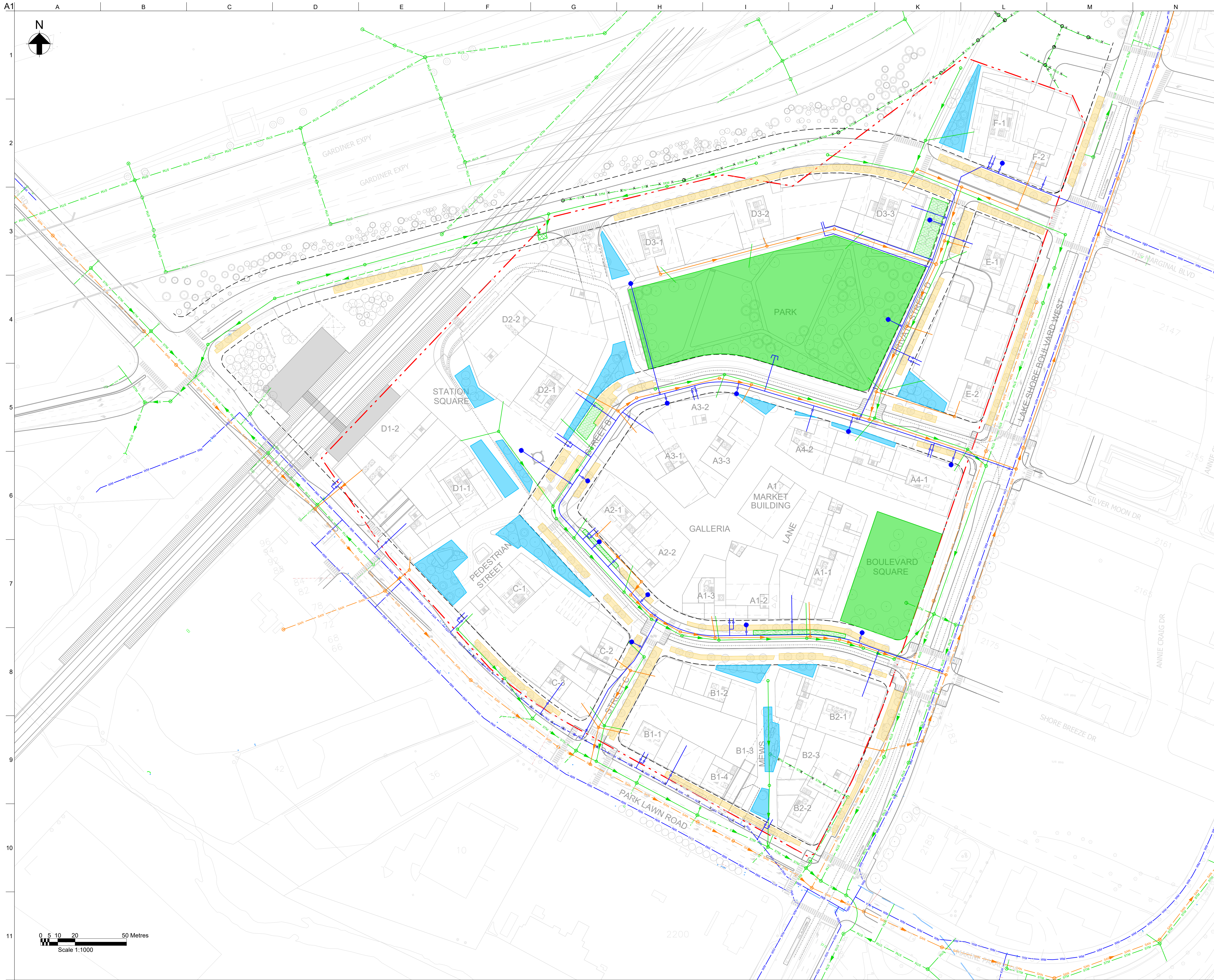
Suitability

Detailed Masterplan

Arup Job No	Rev
277167	02

Name

LSB-ARP-XX-XX-DR-CU-80000



- Notes**
1. All coordinates are in metres and referenced to Zone 10 of the Ontario Coordinate System, NAD (North American Datum) 1927, 1968 adjustment, 3 degree MTM (NAD 27 MTM 3 degrees Zone 10)
 2. Existing services are based in the topographical survey issued by EllisDon on 24 February 2020 and TWAG information provided by Toronto Water on 04 February 2020.
 3. The design of the wet services should comply with Design Criteria for Sewers and Watermains, 2nd edition, January 2021 and Wet Weather Flow Management Guidelines, November 2006
 4. All manholes in the carriageway should be suitable to vehicle loading and finished to same skid resistance as adjacent carriageway.
 5. Connection to existing networks is subject to agreement with Toronto Water.
 6. Location and extent of existing services is indicative only and is intended to identify approximate location of main service corridors. For full details refer to utility providers record drawings or topographical survey.
 7. Off-site reinforcement and temporary construction services are excluded from this drawing.
 8. Proposed network design, plot connections and details are indicative only and are subject to approval by Toronto Water and the building designer.
 9. Extent of proposed geocellular storage, soil cells and permeable pavement is indicative only and subject to further detailed modelling.

- Legend**
- Site Boundary
 - Basement/Tunnel Extent
 - Extent of Right-of-way
- Existing Utilities**
- Sanitary Network
 - Stormwater Network
 - Water Network
 - Existing Utilities to be abandoned or diverted
- Proposed Utilities**
- Stormwater Sewer and Manhole
 - Stormwater Force Main
 - Pumping Station
 - Park area including SWM facility with infiltration
 - Soakaway pit with Infiltration capacity
 - Soil Cells with Infiltration Capacity
 - Soft Landscape
 - Water Main

02	26/02/21	AF	FF	HJ
----	----------	----	----	----

Zoning By-Law Application r1

01	15/05/20	AF	FF	HJ
----	----------	----	----	----

For planning submission

Rev	Date	By	Chkd	Appd

ARUP
Arup Canada Inc.
121 Bloor Street East
Suite 900
Toronto ON M4W 3M5
Canada
www.arup.com

Client

First Capital (Park Lawn) Corporation and 2253213 Ontario Limited

Project Title

2150 Lake Shore

Drawing Title

Public Utilities Plan

Scale at Arch B: 1:1000

Role: Civil

Suitability: Detailed Masterplan

Arup Job No	Rev
277167	02

Name

LSB-ARP-XX-XX-DR-CU-80001