



PROPOSED PARK LAWN GO STATION

Public Meeting No.1 / June 25, 2020

WELCOME

At this meeting, you will learn about potential transit improvement in the area and the environmental assessment process for a proposed new GO Station.

WHAT YOU WILL LEARN

- Overview of the proposed GO Station
- The environmental assessment process
- Studies being completed
- How to provide feedback

YOU CAN PARTICIPATE BY

- Listening to the Public Meeting Presentation; and/or
- Submitting questions via email or on the Q&A Platform at engage.2150lakeshore.com/transitea



PROPOSED PARK LAWN GO STATION PROJECT OVERVIEW

- FCR (Park Lawn) Corporation has proposed a new GO Station to be located along the Lakeshore West Rail Corridor, between Mimico and Exhibition Stations
- The new proposed GO Station would complement First Capital's proposed 2150 Lake Shore Blvd. W. transit-oriented mixed-use development
- GO Transit currently operates train services along the Lakeshore West Corridor, from Union Station in Toronto to Niagara Falls and West Harbour in Hamilton
- An Environmental Assessment will be completed which will follow the Transit Project Assessment Process (TPAP), as prescribed in O. Reg. 231/08 under the *Environmental Assessment Act*
- A new Park Lawn GO Station is proposed to be built through the Transit Oriented Communities Program, which aims to deliver public transit infrastructure by leveraging third-party investment to connect more people to jobs and housing
- The proposed station would include a fully accessible Park Lawn GO Station building, to be owned and operated by Metrolinx, with high quality connections to local transit



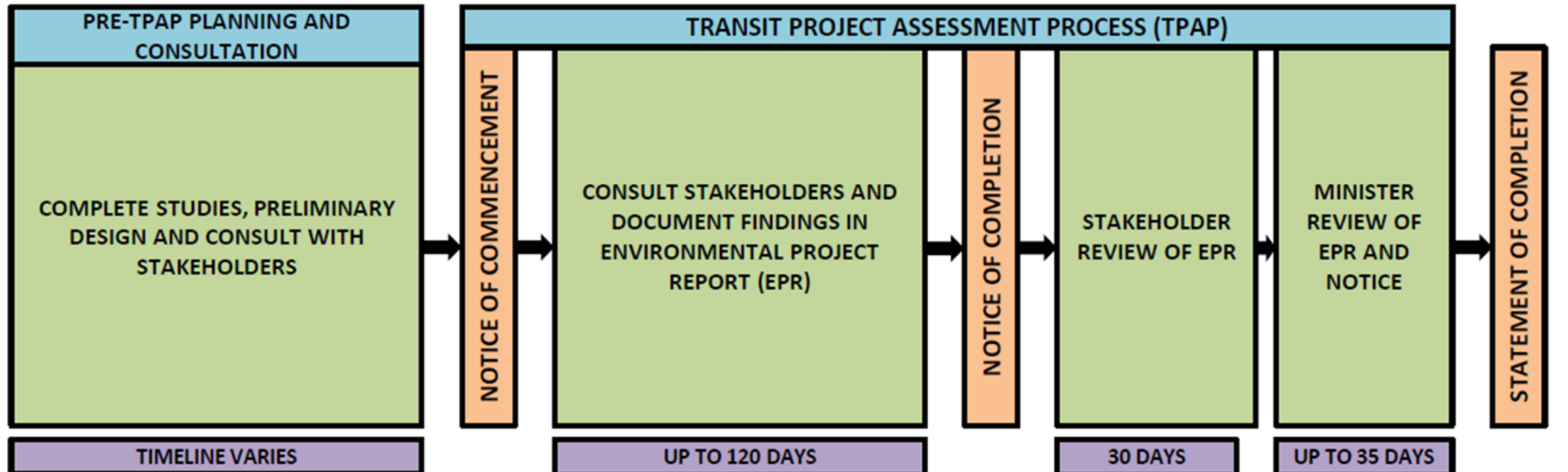
PARK LAWN GO STATION LAKESHORE WEST CORRIDOR



PARK LAWN GO STATION STUDY AREA



TRANSIT PROJECT ASSESSMENT PROCESS



↑
YOU ARE HERE

WHAT ARE WE ASSESSING?

- Existing environmental conditions will be determined and the significance of specific features will be evaluated.
- Potential effects of the Project on these features will be identified and documented.
- Appropriate mitigation measures, compensation, monitoring strategies and future studies will be recommended.
- The next few slides present the status of ongoing studies.

NATURAL ENVIRONMENT

- Vegetation
- Wildlife
- Fish and Fish Habitat
- Sensitive Areas
- Species at Risk

SOCIO-ECONOMIC ENVIRONMENT

- Existing and Planned Land uses
- Developments

CULTURAL ENVIRONMENT

- Built Heritage
- Cultural Heritage Landscape
- Archaeology

TECHNICAL

- Air Quality
- Noise and Vibration
- Transportation

NATURAL ENVIRONMENT

INITIAL STUDIES

- No Species at Risk plants or vegetation communities identified to date
- Mimico Creek supports a wide variety of fish
- Initial Ecological Land Classification identified 9 terrestrial ecosites, 1 wetland ecosite, and 1 aquatic ecosite
- General area likely supports: Coyote, Groundhog, Raccoon, Chipmunk, Eastern Grey and Red Squirrels
- Small woodlots have the potential to provide habitat for woodland bird species

FIELD WORK PENDING

- Breeding and Species at Risk bird surveys
- Vascular plants and plant Species at Risk surveys
- Bat snag survey
- Aquatic and fish habitat surveys





SOCIO-ECONOMIC AND LAND USE

REVIEW UNDERWAY

- Socio-economic features and land uses within 400m of the proposed footprint
- Existing and proposed land use
- Neighbourhood profiles
- Population and employment data review
- Community amenities

TO BE COMPLETED

- Public realm improvements and features
- Safety and security analysis
- Aesthetic and visual analysis
- Effects assessment and development of mitigation measures

AIR QUALITY

STUDIES UNDERWAY

- Compilation of background air quality data
- Compilation of emissions factors
- Identification of potential sensitive receptors

TO BE COMPLETED

- Air dispersion modeling
- Effects assessment and development of mitigation



NOISE AND VIBRATION

STUDIES UNDERWAY

- Baseline noise measurements
- Baseline vibration measurements
- Identification of potential sensitive receptors

TO BE COMPLETED

- Construction noise assessment
- Operational noise assessment
- Construction vibration assessment
- Operational vibration assessment
- Noise and vibration mitigation





CULTURAL ENVIRONMENT BUILT HERITAGE

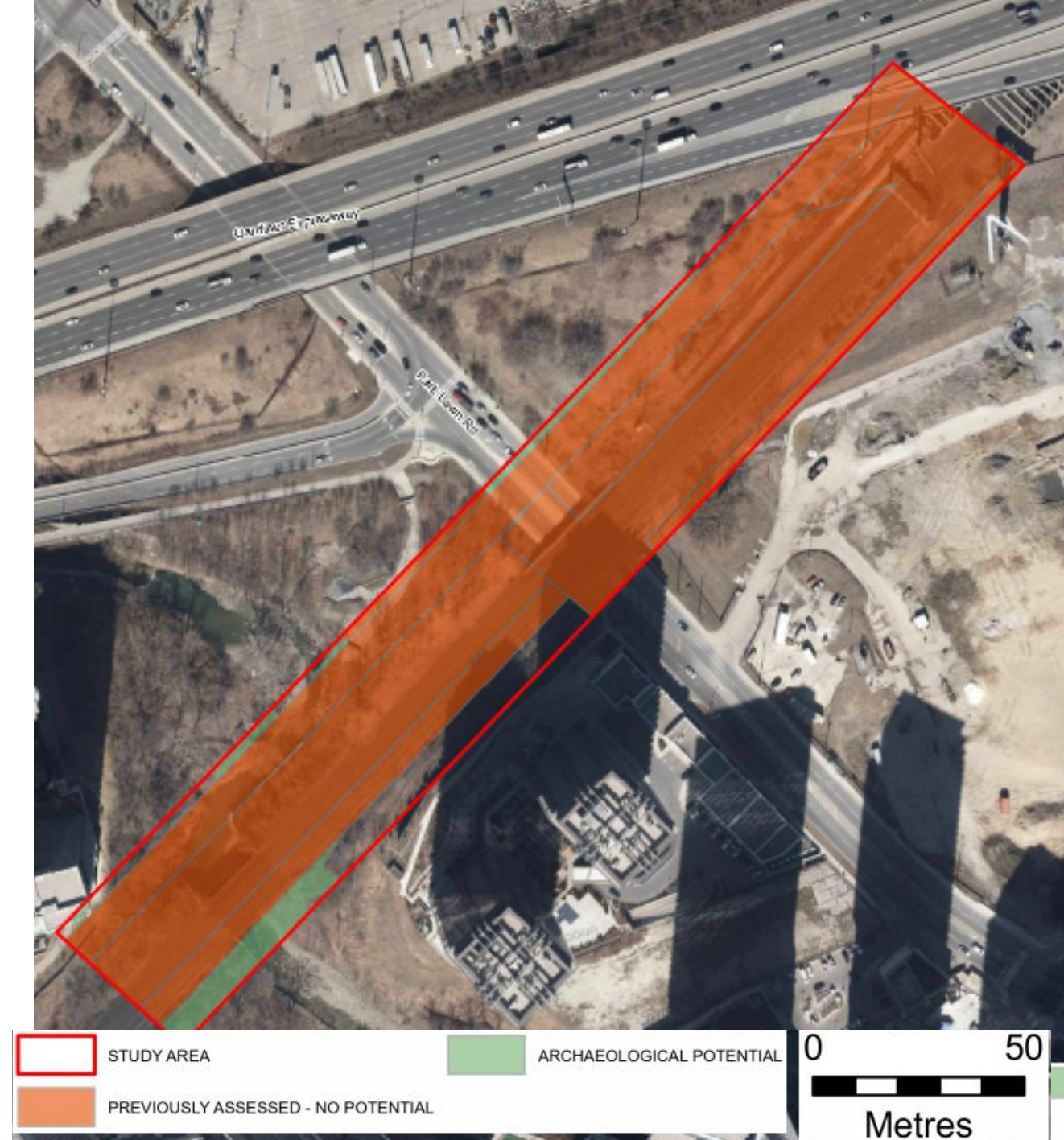
INITIAL STUDIES

- Water Tower identified as a cultural heritage resource
- No properties within or adjacent to the Study Area have been designated and no provincial heritage properties are within or adjacent to the Study Area
- No heritage conservation easements within or adjacent to the Study Area

ARCHAEOLOGICAL

INITIAL STUDIES

- Previous studies found that portions of the Study Area had areas of heavy disturbance, as well as a small area of archaeological potential near Mimico Creek





TRANSPORTATION

STUDIES UNDERWAY

- Planning policy review
- Determine existing transportation conditions
- Review of proposed GO Station traffic activity
- Review of traffic studies associated with Park Lawn – Lake Shore Secondary Planning process and the Park Lawn – Lake Shore Transportation Master Plan
- Review of Near Term and Longer Term transportation network changes

NEXT STEPS



WE WANT YOUR FEEDBACK

STAY IN TOUCH

- Your feedback is important to informing this Project. Share your comments by submitting a comment on the website or via email.
- Sign-up for email updates to stay informed at transitea@2150lakeshore.com
- Visit the Project website for updates: 2150lakeshore.com/transitea

RECAP OF PUBLIC MEETING

- All feedback will be recorded and a summary will be posted on the Project website following the meeting.
- Any comments and feedback received between June 25th and July 20th, 2020 will be included in the Public Meeting summary report which will be published on the website in mid-August.

